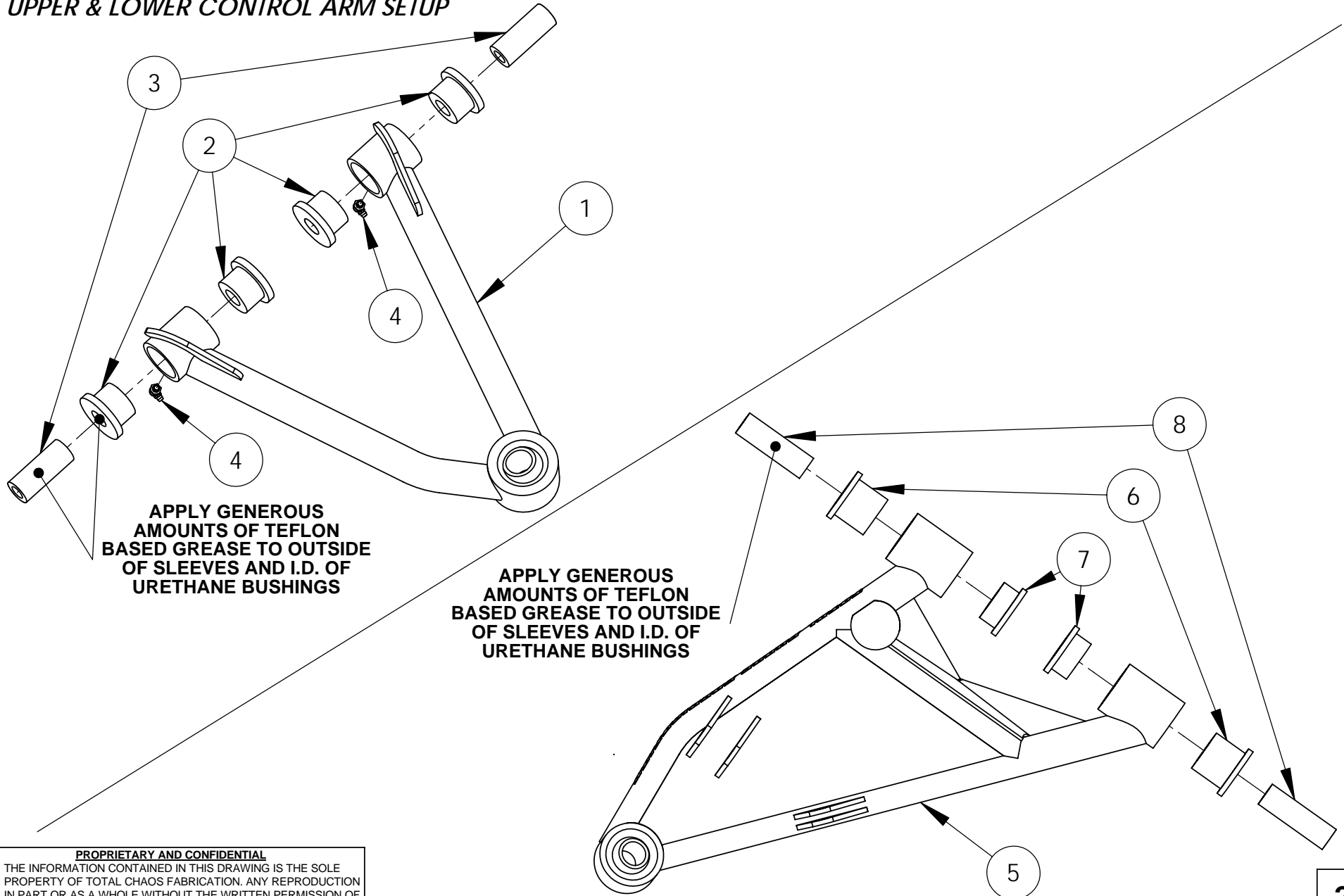


**PROPRIETARY AND CONFIDENTIAL**

THE INFORMATION CONTAINED IN THIS DRAWING IS THE SOLE PROPERTY OF TOTAL CHAOS FABRICATION. ANY REPRODUCTION IN PART OR AS A WHOLE WITHOUT THE WRITTEN PERMISSION OF TOTAL CHAOS FABRICATION IS PROHIBITED.

\*LEFT SIDE OF TRUCK SHOWN. SOME ITEMS NOT SHOWN FOR CLARITY.

### UPPER & LOWER CONTROL ARM SETUP



**PROPRIETARY AND CONFIDENTIAL**

THE INFORMATION CONTAINED IN THIS DRAWING IS THE SOLE PROPERTY OF TOTAL CHAOS FABRICATION. ANY REPRODUCTION IN PART OR AS A WHOLE WITHOUT THE WRITTEN PERMISSION OF TOTAL CHAOS FABRICATION IS PROHIBITED.

\*LEFT SIDE OF TRUCK SHOWN. SOME ITEMS NOT SHOWN FOR CLARITY.

**SHOCK TOWER MODIFICATIONS**

#1 DRILL FACTORY SHOCK MOUNT HOLES ON COIL BUCKET TO 1/2" (6 TOTAL)

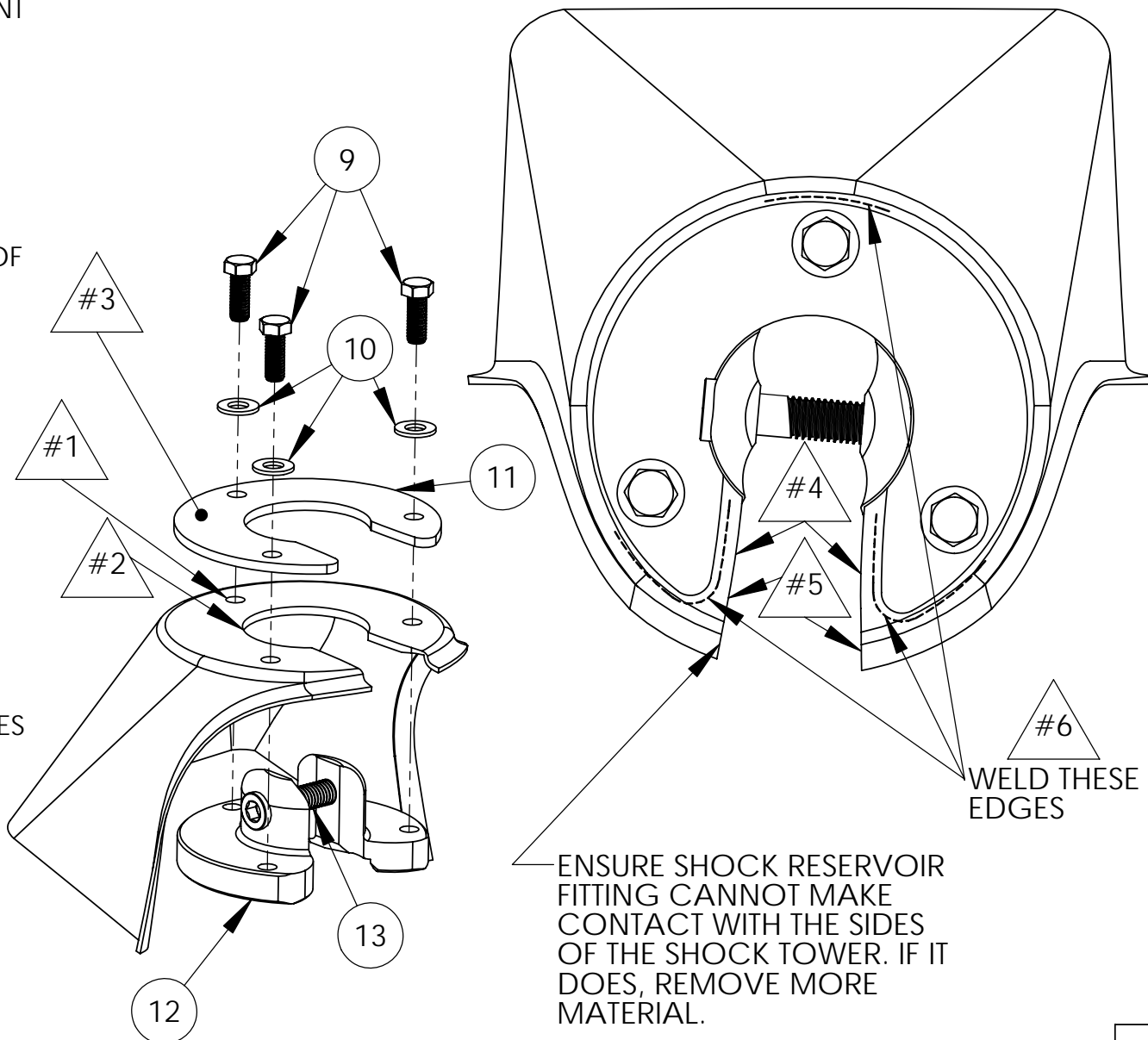
#2 USING A DIE GRINDER, OPEN UP THE CENTER HOLE OF THE SHOCK TOWER UNTIL THE TC BILLET SHOCK ADAPTER WITH BOLT INSTALLED, FITS INSIDE AND IS FLUSH WITH BOTTOM OF TOWER.

#3 BOLT REINFORCEMENT PLATE TO TOP OF SHOCK TOWER USING THE BILLET SHOCK MOUNT.

#4 SCRIBE LINES USING THE REINFORCEMENT PLATE AS A GUIDE. LEAVE ABOUT 1/4" OF MATERIAL ON THE SHOCK TOWER FOR WELDING AREA. USE DRAWING ON RIGHT FOR REFERENCE.

#5 CUT SHOCK TOWER USING CUTOFF WHEEL. DEBURR EDGES AFTER.

#6 WELD REINFORCEMENT PLATE TO TOP OF SHOCK TOWER IN THE 3 SPECIFIED LOCATIONS. THE REAR SECTION CAN BE ACCESSED THROUGH THE ENGINE COMPARTMENT.

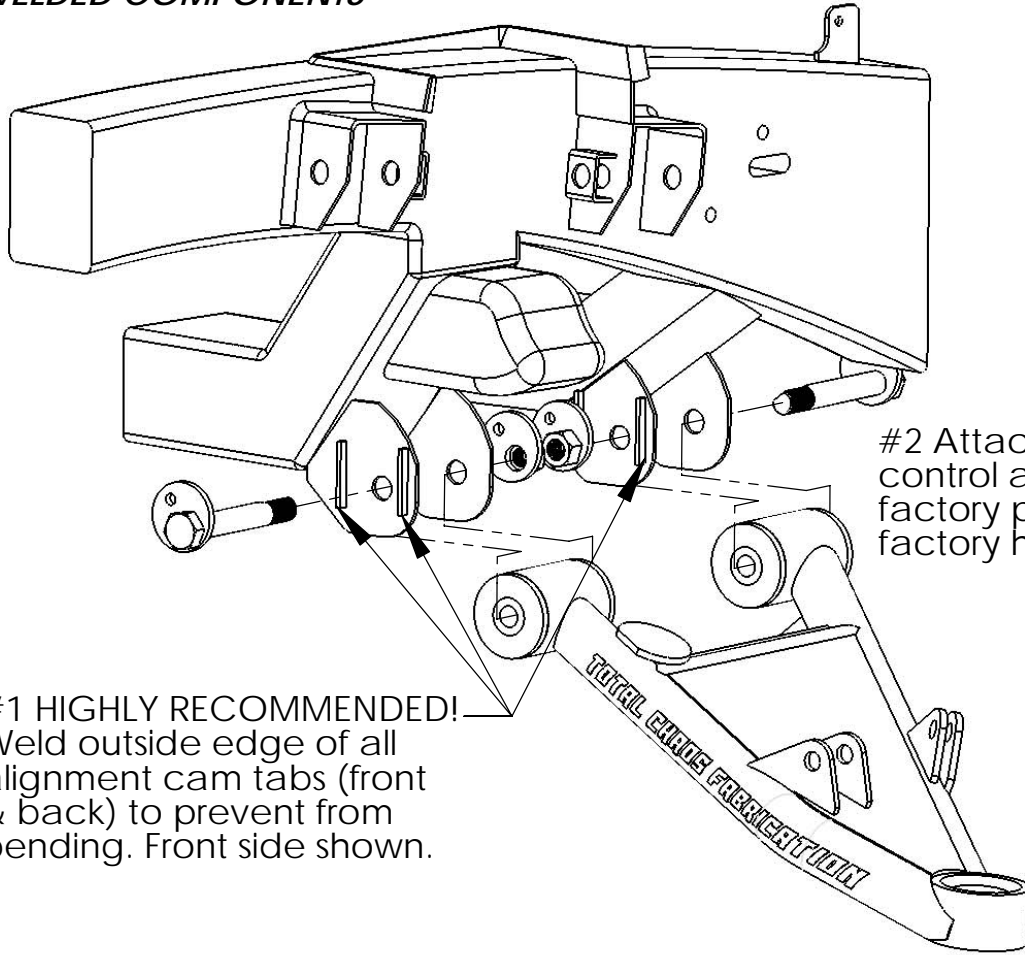


ENSURE SHOCK RESERVOIR FITTING CANNOT MAKE CONTACT WITH THE SIDES OF THE SHOCK TOWER. IF IT DOES, REMOVE MORE MATERIAL.

**PROPRIETARY AND CONFIDENTIAL**  
THE INFORMATION CONTAINED IN THIS DRAWING IS THE SOLE PROPERTY OF TOTAL CHAOS FABRICATION. ANY REPRODUCTION IN PART OR AS A WHOLE WITHOUT THE WRITTEN PERMISSION OF TOTAL CHAOS FABRICATION IS PROHIBITED.

\*LEFT SIDE OF TRUCK SHOWN. SOME ITEMS NOT SHOWN FOR CLARITY.

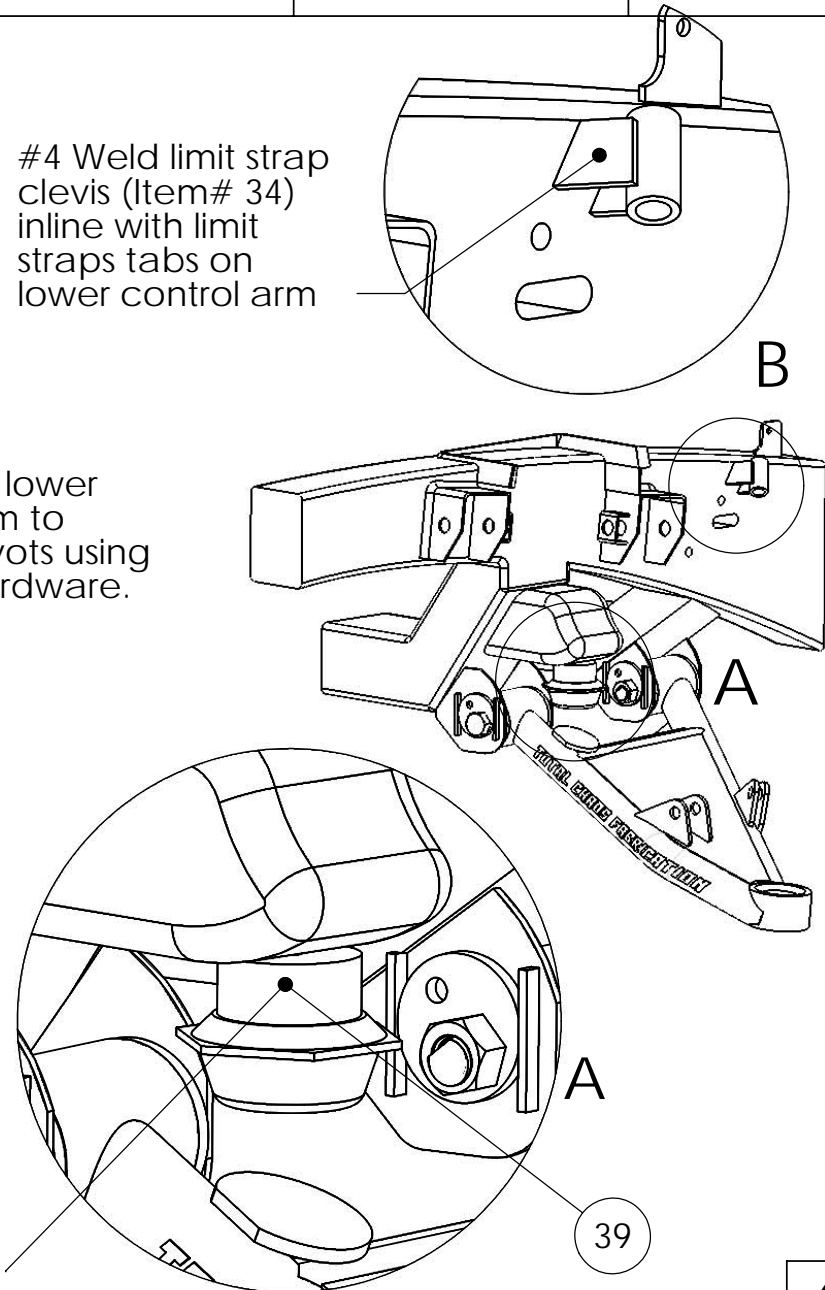
**WELDED COMPONENTS**



#1 HIGHLY RECOMMENDED!  
Weld outside edge of all alignment cam tabs (front & back) to prevent from bending. Front side shown.

#2 Attach lower control arm to factory pivots using factory hardware.

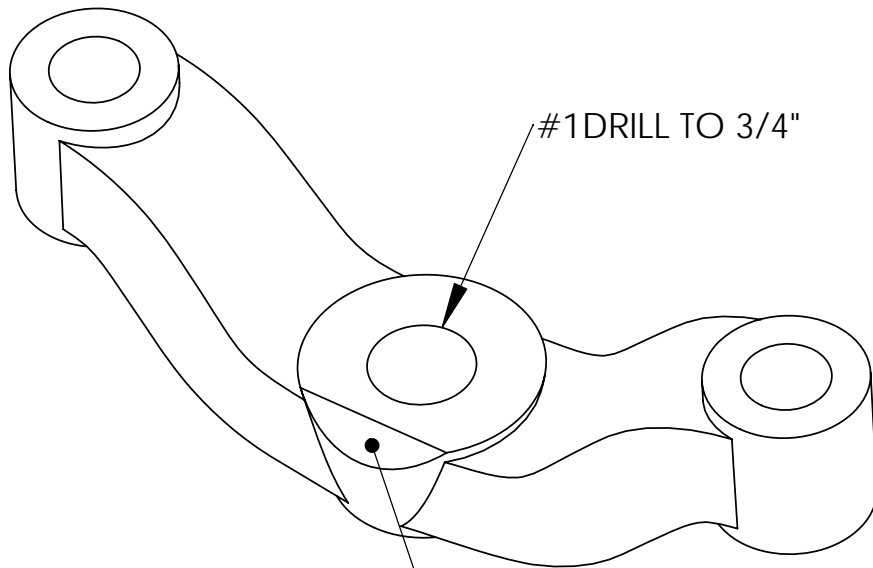
#3 Attach factory bumpstop to bumpstop spacer and locate them so the lower control arm pad is centered with the bumpstop. Weld spacer onto frame without bumpstop attached.



**PROPRIETARY AND CONFIDENTIAL**  
THE INFORMATION CONTAINED IN THIS DRAWING IS THE SOLE PROPERTY OF TOTAL CHAOS FABRICATION. ANY REPRODUCTION IN PART OR AS A WHOLE WITHOUT THE WRITTEN PERMISSION OF TOTAL CHAOS FABRICATION IS PROHIBITED.

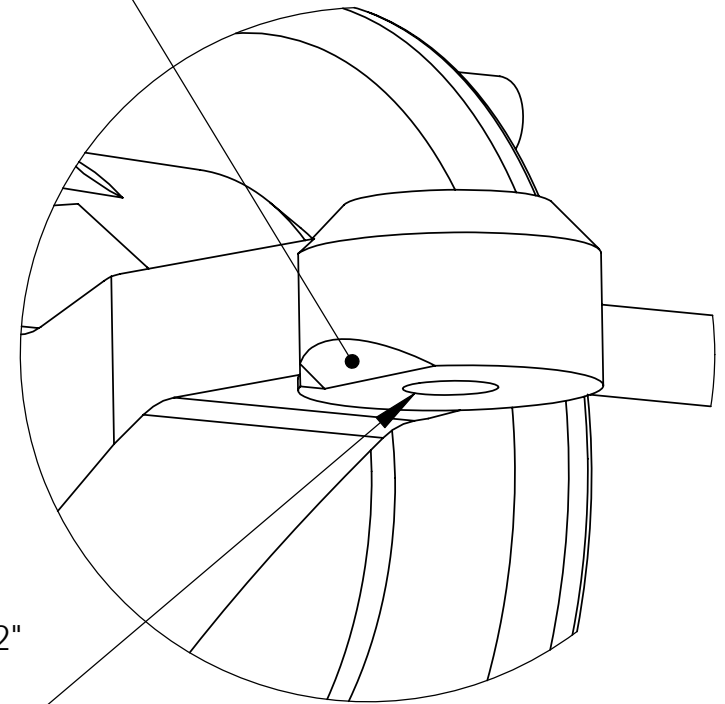
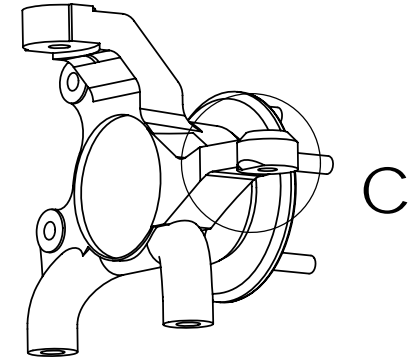
\*LEFT SIDE OF TRUCK SHOWN. SOME ITEMS NOT SHOWN FOR CLARITY.

**LOWER UNIBALL & STEERING MODIFICATIONS**



#2 GRIND EDGE TO ENSURE NO CONTACT IS MADE WITH LOWER CONTROL ARM AT FULL COMPRESSION

#3 GRIND BOTTOM EDGE OF STEERING ARMS ON SPINDLES TO ALLOW TIE ROD ENDS TO CYCLE WITHOUT BINDING.



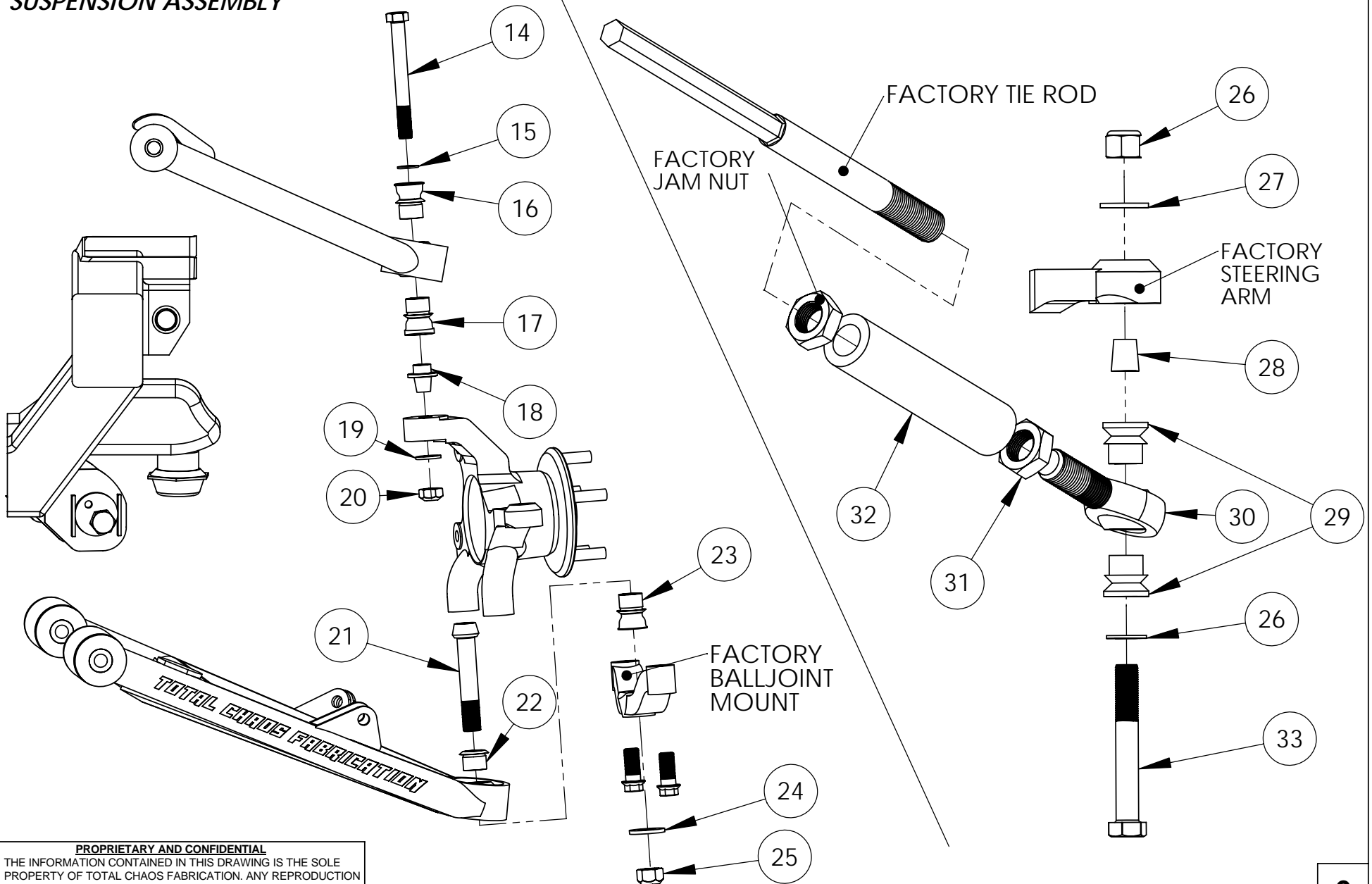
#4 DRILL TO 1/2" FROM TOP TO BOTTOM

**PROPRIETARY AND CONFIDENTIAL**

THE INFORMATION CONTAINED IN THIS DRAWING IS THE SOLE PROPERTY OF TOTAL CHAOS FABRICATION. ANY REPRODUCTION IN PART OR AS A WHOLE WITHOUT THE WRITTEN PERMISSION OF TOTAL CHAOS FABRICATION IS PROHIBITED.

\*LEFT SIDE OF TRUCK SHOWN. SOME ITEMS NOT SHOWN FOR CLARITY.

### SUSPENSION ASSEMBLY

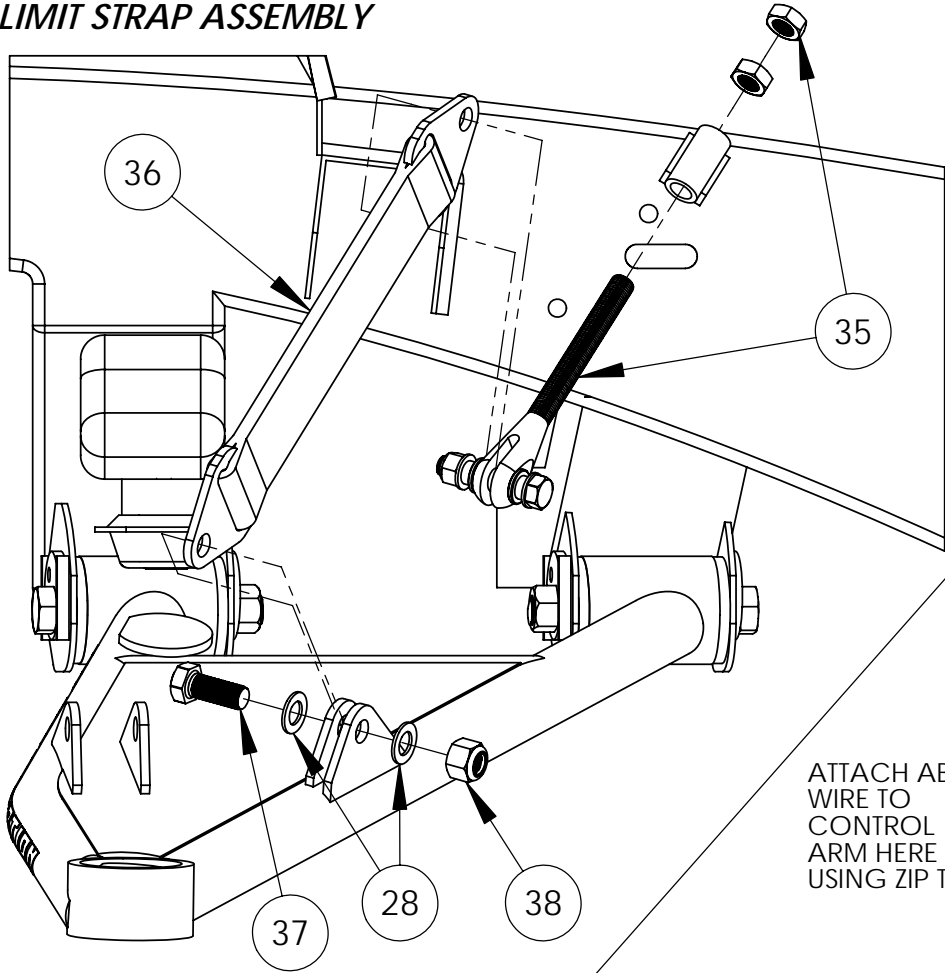


**PROPRIETARY AND CONFIDENTIAL**

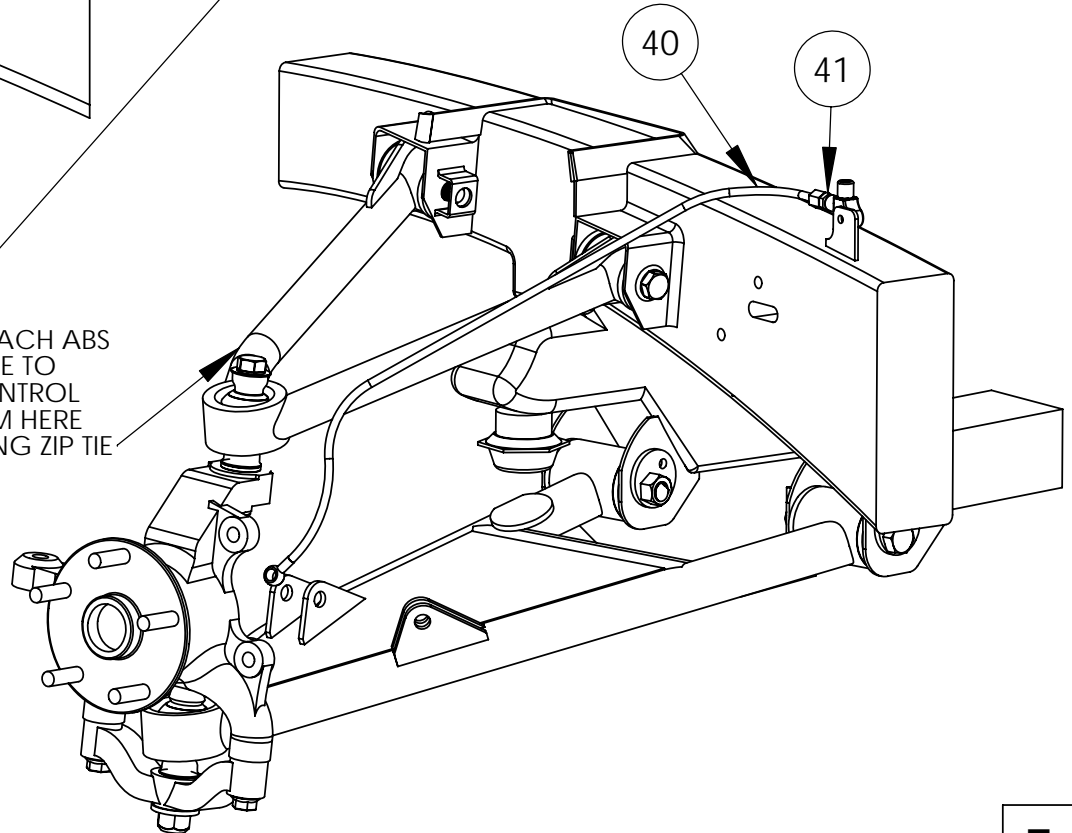
THE INFORMATION CONTAINED IN THIS DRAWING IS THE SOLE PROPERTY OF TOTAL CHAOS FABRICATION. ANY REPRODUCTION IN PART OR AS A WHOLE WITHOUT THE WRITTEN PERMISSION OF TOTAL CHAOS FABRICATION IS PROHIBITED.

\*LEFT SIDE OF TRUCK SHOWN. SOME ITEMS NOT SHOWN FOR CLARITY.

**LIMIT STRAP ASSEMBLY**



**BRAKE LINE ATTACHMENT**



**PROPRIETARY AND CONFIDENTIAL**  
THE INFORMATION CONTAINED IN THIS DRAWING IS THE SOLE PROPERTY OF TOTAL CHAOS FABRICATION. ANY REPRODUCTION IN PART OR AS A WHOLE WITHOUT THE WRITTEN PERMISSION OF TOTAL CHAOS FABRICATION IS PROHIBITED.

\*LEFT SIDE OF TRUCK SHOWN. SOME ITEMS NOT SHOWN FOR CLARITY.

**INSTALLATION NOTES**

The factory manual is required for torque specifications on all hardware. This procedure will involve the removal and re-installation of many parts. Always use factory replacements for worn or damaged parts. Always use new cotter keys during re-installation.

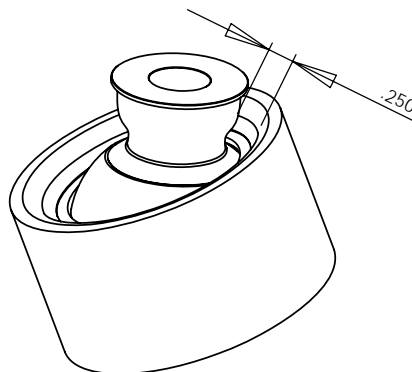
Some items are not shown for clarity.

**TORQUE SPECIFICATIONS**

ITEM #	PART #	PAGE #	DESCRIPTION	TORQUE
9	10712	3	SHOCK CIRCLE BOLTS	35 ft/lbs.
13	10020	3	UPPER SHOCK BOLT	75 ft/lbs.
14	10251	6	UPPER A-ARM BOLT	100 ft/lbs.
21	10342	6	LOWER A-ARM BOLT	100 ft/lbs.
33	10035	6	TIE ROD END BOLT	90 ft/lbs.

Coil Spring Preload Settings (600 lbs. springs):  
1 7/8" between top of adjustment collar to bottom of top cap

After installation is complete (shocks installed), adjust limit strap so that there is a 1/4" gap between the high misalignment spacer and the uniball cup on the upper control arm (see model below). Limit straps will stretch over time and will need to be adjusted periodically to prevent damage to shocks and uniball components.



**TOTAL CHAOS Fabrication Inc.**  
159 North Maple St. Unit J  
Corona, CA 92880  
951.737.9682  
**WWW.CHAOSFAB.COM**

**PROPRIETARY AND CONFIDENTIAL**  
THE INFORMATION CONTAINED IN THIS DRAWING IS THE SOLE PROPERTY OF TOTAL CHAOS FABRICATION. ANY REPRODUCTION IN PART OR AS A WHOLE WITHOUT THE WRITTEN PERMISSION OF TOTAL CHAOS FABRICATION IS PROHIBITED.

PARTS LIST: 05+ TACOMA 2WD LONG TRAVEL			
ITEM #	PART #	QTY.	ITEM DESCRIPTION
1	88001L	1	CONTROL ARM, 05+ TACOMA UPPER LEFT
	88001R	1	CONTROL ARM, 05+ TACOMA UPPER RIGHT
2	42005	8	BUSHING, URETHANE UPPER CONTROL ARM
3	68501	4	SLEEVE, UPPER ARM INNER
4	10005	4	FITTING, GREASE (ZERK)
5	88002L	1	CONTROL ARM, 05+ TACOMA LOWER LEFT
	88002R	1	CONTROL ARM, 05+ TACOMA LOWER RIGHT
6	60292	4	BUSHING, URETHANE LONG HALF
7	60684	4	BUSHING, URETHANE SHORT HALF
8	68604	4	SLEEVE, LOWER ARM INNER
9	10712	6	BOLT, 3/8" X 1.25L SHOCK MOUNT
10	12011	6	WASHER, 3/8" SAE SHOCK MOUNT
11	59804	2	REINFORCEMENT PLATE, SHOCK TOWER
12	58621K	2	SHOCK CIRCLE, BILLET, FOX/KING
13	10020	2	BOLT, 1/2" SOCKET HEAD FOX/KING SHOCK
14	10251	2	BOLT, 9/16" x 5.00L
15	12203	2	WASHER, 9/16" AN
16	100916TCF	2	SPACER, TOP UPPER ARM MISALIGNMENT
17	10034T	2	SPACER, BOTTOM UPPER ARM MISALIGNMENT
18	30004	2	SLEEVE, 9/16" TAPERED ADAPTER
19	12204	2	WASHER, 9/16" SAE
20	11202	2	NUT, 9/16" C-LOCK
21	10342	2	BOLT, 3/4" x 4.25L SOCKET HEAD
22	10034C	2	SPACER, TOP LOWER ARM MISALIGNMENT
23	10034TCF	2	SPACER, BOTTOM LOWER ARM MISALIGNMENT
24	12304	2	WASHER, 3/4" SAE
25	11302	2	NUT, 3/4" GRADE C LOCK
26	11002	2	NUT, 1/2" C-LOCK
27	12003	12	WASHER, 1/2" AN
28	69612	2	1/2" TAPER ADAPTER
29	13412	4	SPACER, OUTER TIE-ROD END MISALIGNMENT
30	JMX12T	2	HEIM JOINT, 3/4" x 3/4" TEFLON LINED RH
31	11373	2	JAM NUT, 3/4" RH
32	99056	2	TIE-ROD EXTENSION, 15MM
33	10035	2	BOLT, 1/2" x 3 1/2" STEERING
34	69619	2	BRACKET, LIMIT STRAP CLEVIS, WELD ON
35	69618	2	CLEVIS, ADJUSTABLE LIMIT STRAP
36	69617	2	STRAP, 12" LIMIT
37	10015	2	BOLT, 1/2" x 1 1/2" LIMIT STRAP
	10025	2	BOLT, 1/2" x 2 1/2" LOWER SHOCK
38	11001	4	NUT, 1/2" NYLOCK
39	68610	2	SPACER, BUMPSTOP
40	88330	2	LINE, EXTENDED BRAKE
41	33301	2	FITTING, 12mm x-3 AN

\*LEFT SIDE OF TRUCK SHOWN. SOME ITEMS NOT SHOWN FOR CLARITY.