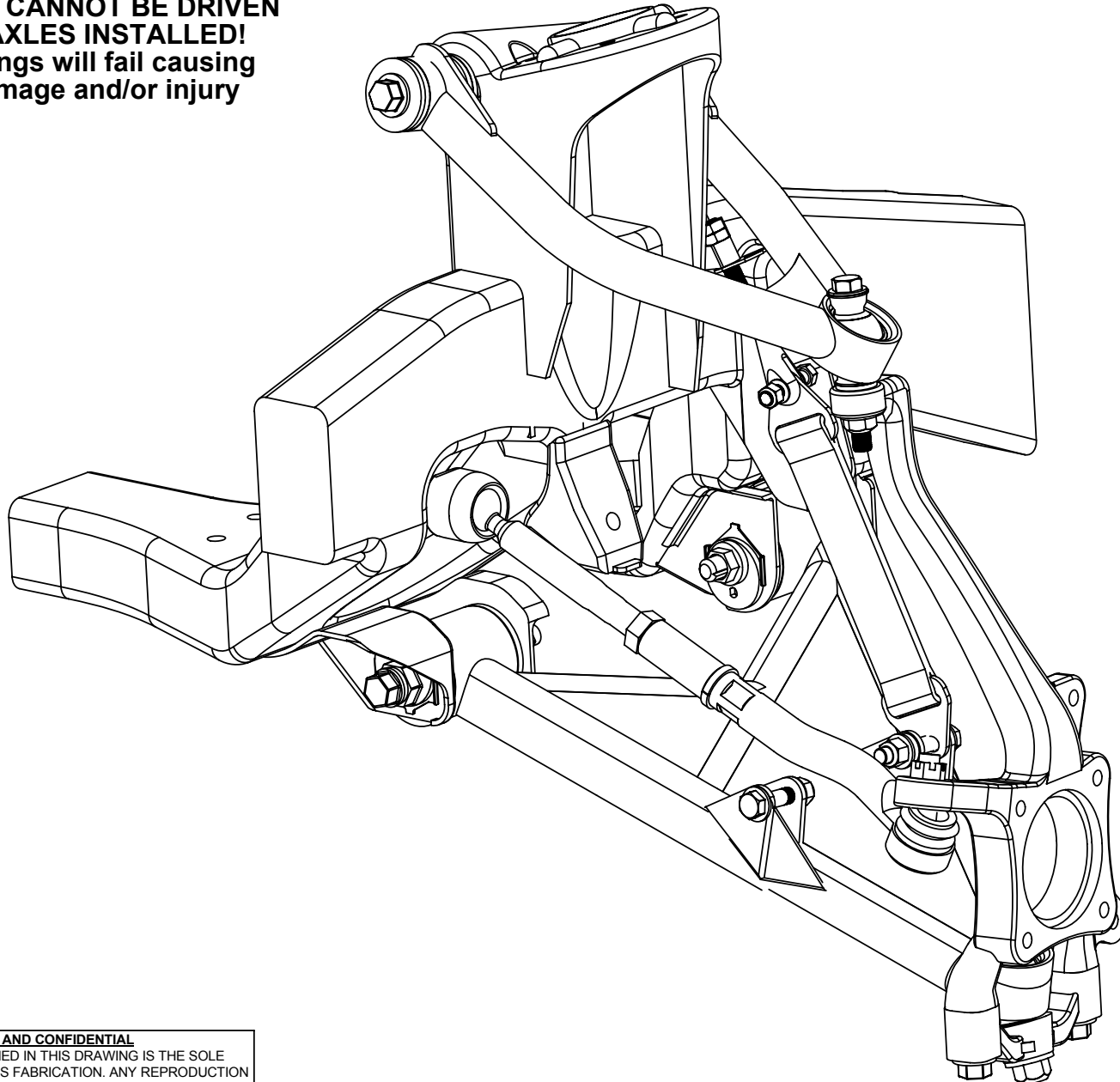


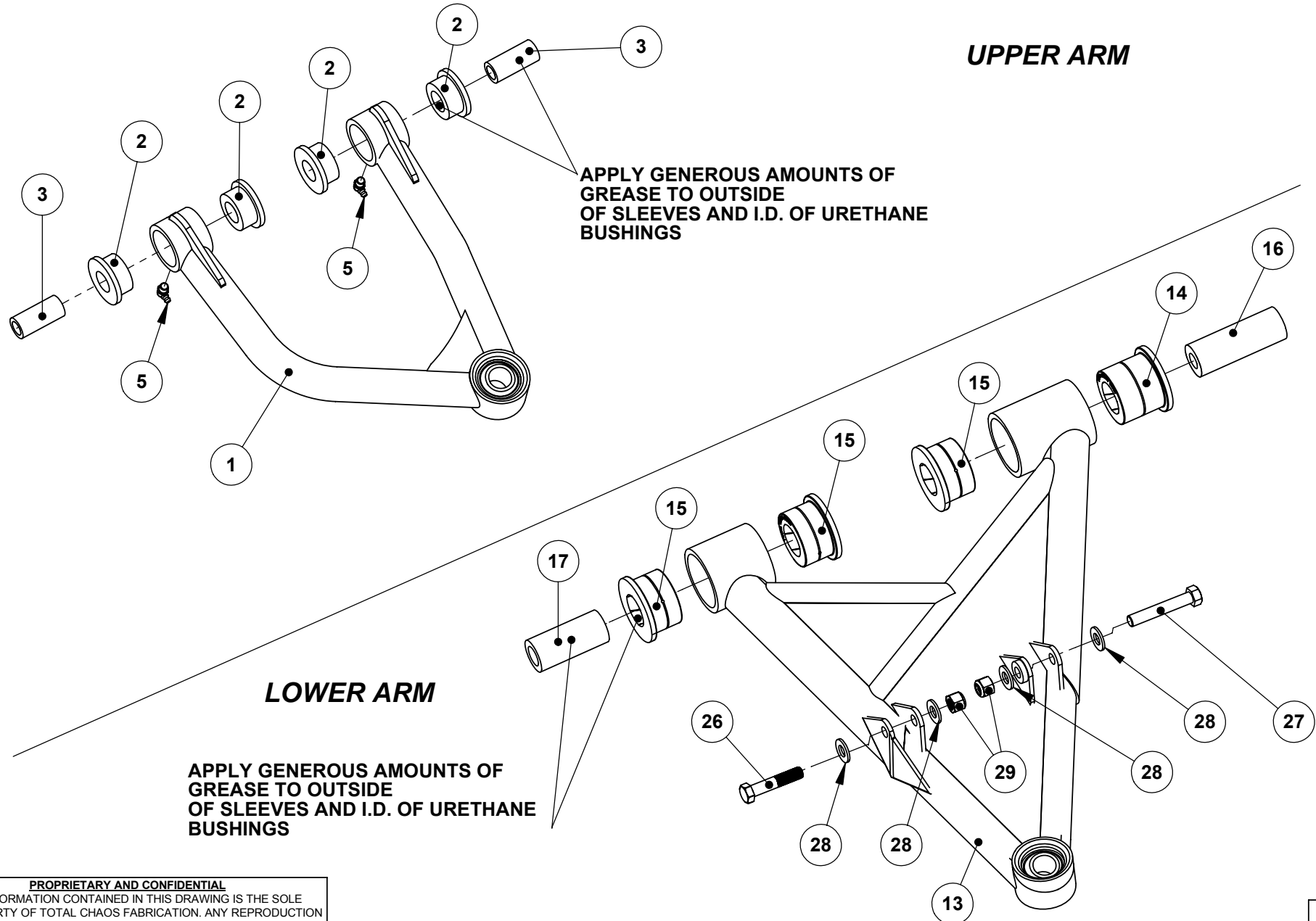
**4WD TRUCKS CANNOT BE DRIVEN  
WITHOUT AXLES INSTALLED!**  
Wheel bearings will fail causing  
serious damage and/or injury



**PROPRIETARY AND CONFIDENTIAL**

THE INFORMATION CONTAINED IN THIS DRAWING IS THE SOLE  
PROPERTY OF TOTAL CHAOS FABRICATION. ANY REPRODUCTION  
IN PART OR AS A WHOLE WITHOUT THE WRITTEN PERMISSION OF  
TOTAL CHAOS FABRICATION IS PROHIBITED.

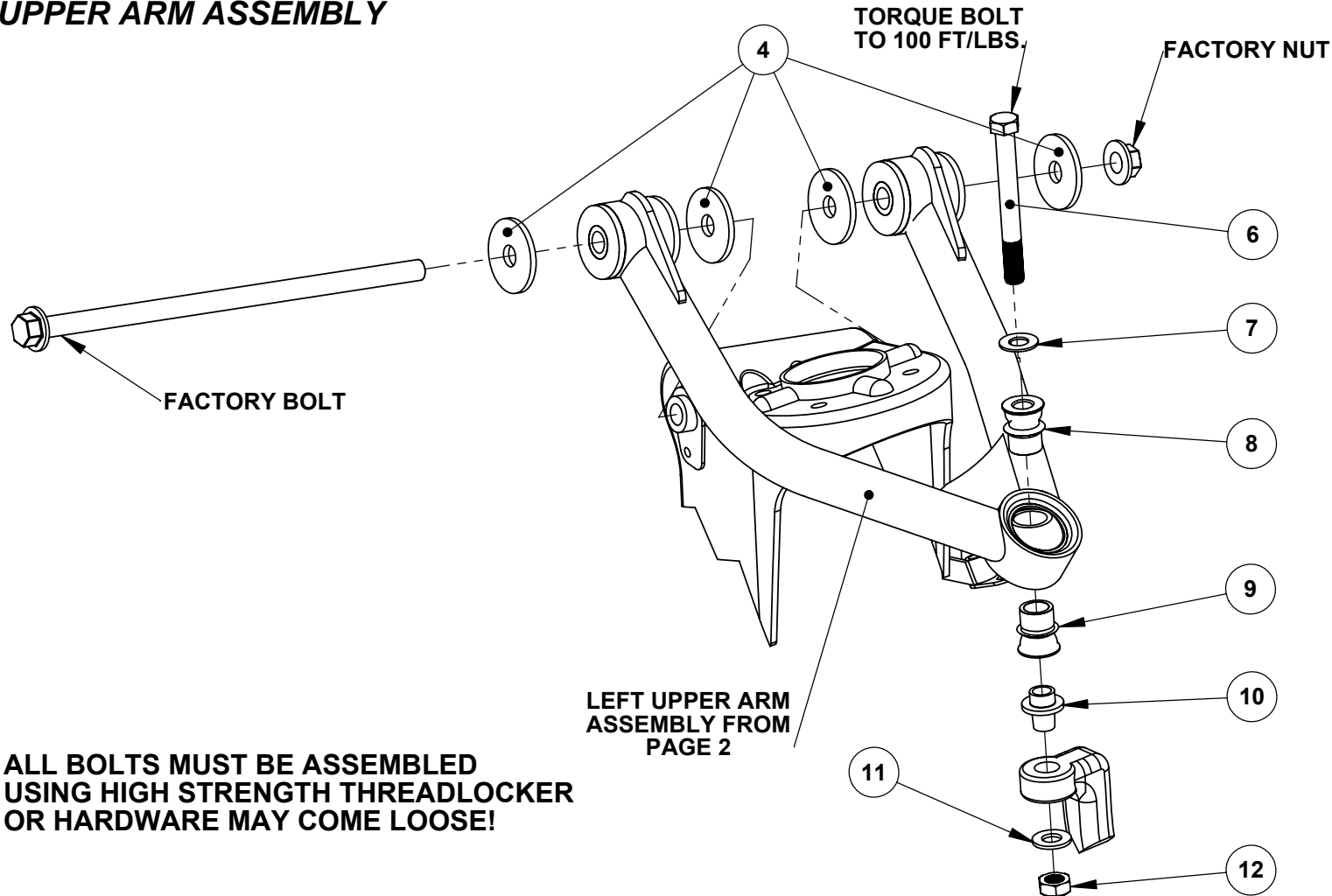
**\*LEFT SIDE OF TRUCK SHOWN. SOME ITEMS NOT SHOWN FOR CLARITY.**



**PROPRIETARY AND CONFIDENTIAL**  
THE INFORMATION CONTAINED IN THIS DRAWING IS THE SOLE PROPERTY OF TOTAL CHAOS FABRICATION. ANY REPRODUCTION IN PART OR AS A WHOLE WITHOUT THE WRITTEN PERMISSION OF TOTAL CHAOS FABRICATION IS PROHIBITED.

\*LEFT SIDE OF TRUCK SHOWN. SOME ITEMS NOT SHOWN FOR CLARITY.

## UPPER ARM ASSEMBLY

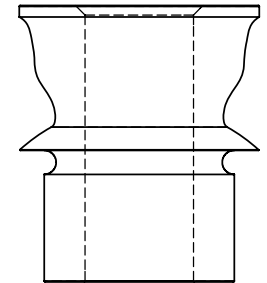


**ALL BOLTS MUST BE ASSEMBLED  
USING HIGH STRENGTH THREADLOCKER  
OR HARDWARE MAY COME LOOSE!**

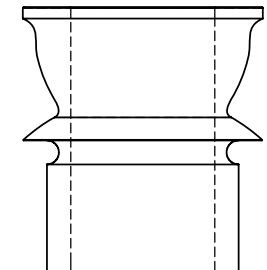
### IMPORTANT NOTE:

During assembly, upper & lower spacers are specific. Failure to follow these instructions will result in damage of all components.

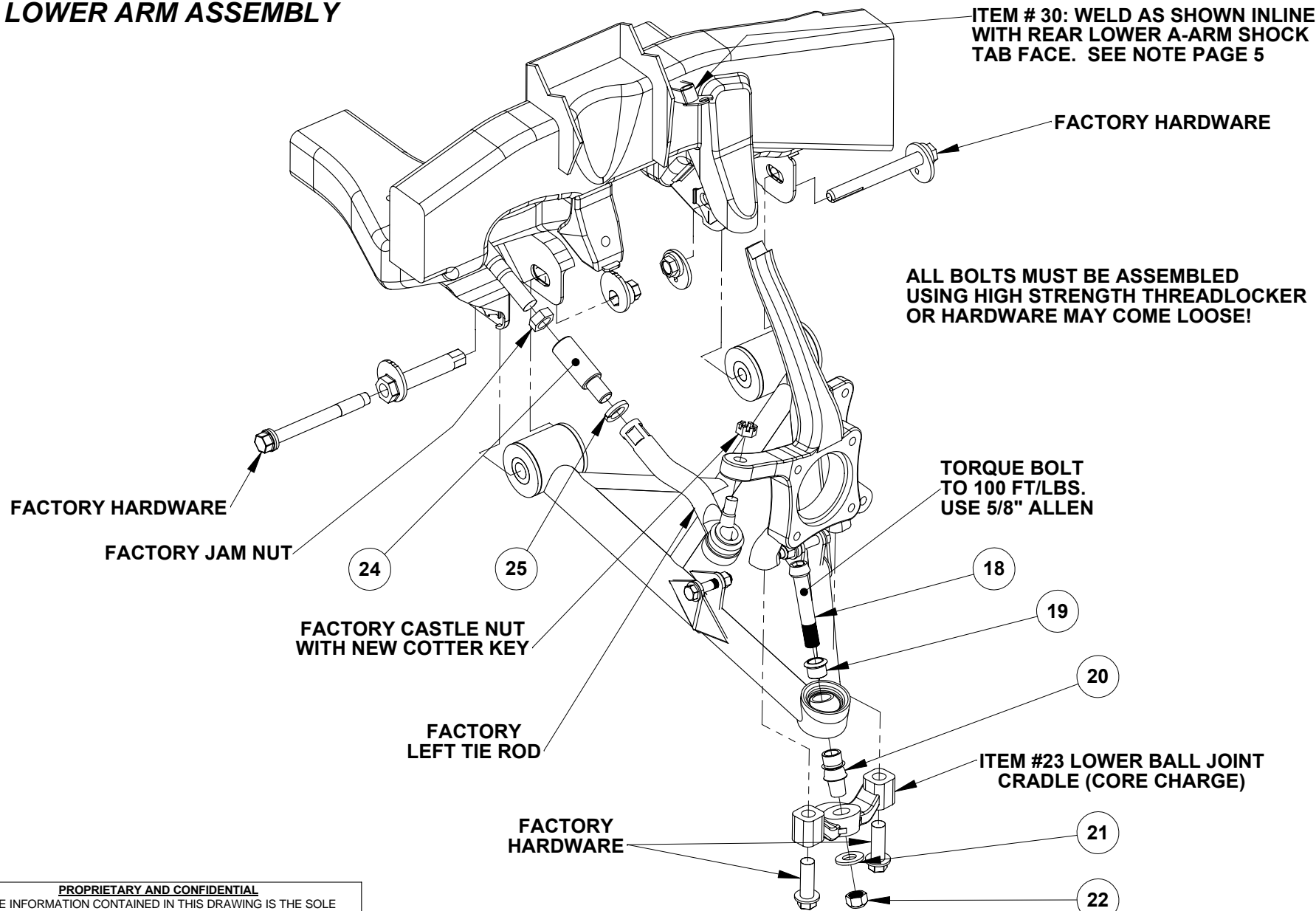
**ITEM#: 8 PART#: 100916**  
Upper spacer has smaller inner diameter



**ITEM#: 9 PART#: 10034TCF**  
Lower spacer has larger inner diameter



## LOWER ARM ASSEMBLY



**PROPRIETARY AND CONFIDENTIAL**  
 THE INFORMATION CONTAINED IN THIS DRAWING IS THE SOLE PROPERTY OF TOTAL CHAOS FABRICATION. ANY REPRODUCTION IN PART OR AS A WHOLE WITHOUT THE WRITTEN PERMISSION OF TOTAL CHAOS FABRICATION IS PROHIBITED.

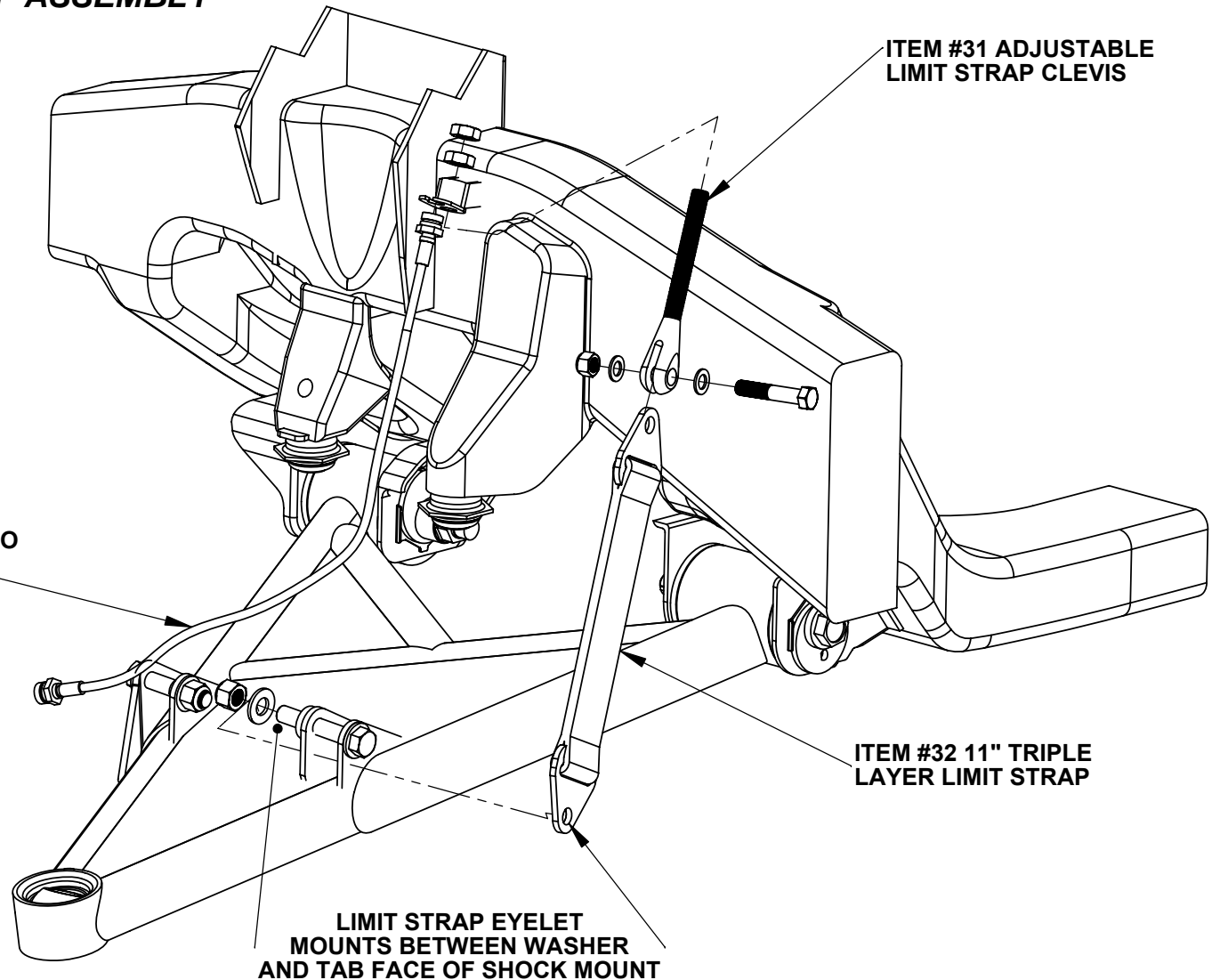
\*LEFT SIDE OF TRUCK SHOWN. SOME ITEMS NOT SHOWN FOR CLARITY.

### BRAKE LINE / LIMIT STRAP ASSEMBLY

ITEM #33 STAINLESS  
STEEL BRAKE LINE

SECURE TO FACTORY  
SPINDLE DURING ASSEMBLY.

**ATTENTION:**  
CONFIRM BRAKE SYSTEM  
HAS BEEN BLED AND  
BRAKE SYSTEM FULLY  
FUNCTIONS PROPERLY PRIOR TO  
DRIVING VEHICLE!



**PROPRIETARY AND CONFIDENTIAL**

THE INFORMATION CONTAINED IN THIS DRAWING IS THE SOLE PROPERTY OF TOTAL CHAOS FABRICATION. ANY REPRODUCTION IN PART OR AS A WHOLE WITHOUT THE WRITTEN PERMISSION OF TOTAL CHAOS FABRICATION IS PROHIBITED.

\*LEFT SIDE OF TRUCK SHOWN. SOME ITEMS NOT SHOWN FOR CLARITY.

### INSTALLATION NOTES

The factory manual is required for torque specifications on all hardware. This procedure will involve the removal and re-installation of many parts. Always use replacement factory parts for any worn or damaged components. Always use new cotter keys for reinstallation of components.

Some items not shown for clarity

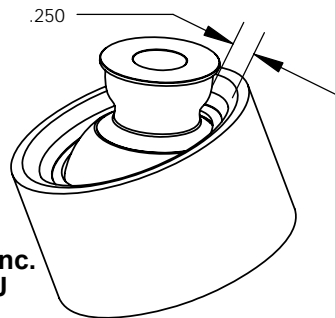
Notes:

Page 2:

Apply generous amounts of grease on items 2 / 3 on upper arm subassembly and items 14 / 15 / 16 / 17 on lower arm subassembly.

Inspect all components and re-torque all hardware within 500 miles.

**After installation is complete (shocks installed), adjust limit strap so that there is a 1/4" gap between the high misalignment spacer and the uniball cup on the upper control arm (see model below). Limit straps will stretch over time and will need to be adjusted periodically to prevent damage to shocks and uniball components.**



**Total Chaos Fabrication Inc.**  
**159 North Maple St. Unit J**  
**Corona, CA 92880**  
**951.737.9682**

**www.CHAOSFAB.com**

**PROPRIETARY AND CONFIDENTIAL**

THE INFORMATION CONTAINED IN THIS DRAWING IS THE SOLE PROPERTY OF TOTAL CHAOS FABRICATION. ANY REPRODUCTION IN PART OR AS A WHOLE WITHOUT THE WRITTEN PERMISSION OF TOTAL CHAOS FABRICATION IS PROHIBITED.

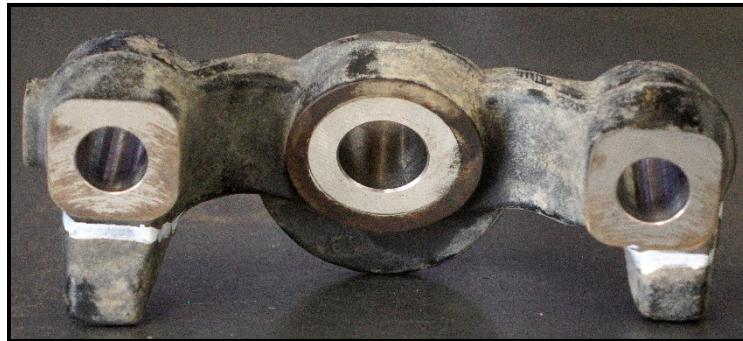
### PARTS LIST: '07 + TOYOTA TUNDRA LONG TRAVEL KIT

| ITEM # | PART #   | QTY.<br>(PER KIT) | ITEM DESCRIPTION                                |
|--------|----------|-------------------|---|
| 1      | 87701L   | 1                 | UPPER A-ARM LEFT '07+ TUNDRA L/T                |
|        | 87701R   | 1                 | UPPER A-ARM RIGHT '07+ TUNDRA L/T               |
| 2      | 60684    | 8                 | BUSHING UNIVERSAL HALF-URETHANE RED             |
| 3      | 69707    | 4                 | INNER SLEEVE, UPPER A-ARM '07+ TUNDRA           |
| 4      | 69720    | 8                 | WASHER, UPPER A-ARM, 2 1/4" X 3/16" X 16.5mm    |
| 5      | 10005    | 4                 | ZERK FITTING, 1/4"-28 90 DEGREE                 |
| 6      | 10251    | 2                 | BOLT, 9/16"-18 X 5" NUCOR                       |
| 7      | 12203    | 2                 | WASHER, 9/16" AN (GOLD ZINC THIN)               |
| 8      | 100916   | 2                 | 1" -9/16" HI-MISALIGNMENT SPACER TCF            |
| 9      | 10034TCF | 2                 | 1"-3/4" HI-MISALIGNMENT SPACER TCF              |
| 10     | 30005    | 2                 | 9/16" ID TAPERED SPINDLE ADAPTER, '07+ TUNDRA   |
| 11     | 12204    | 2                 | WASHER, 9/16" SAE (GOLD ZINC THICK)             |
| 12     | 11202    | 2                 | NUT, 9/16"-18 C-LOCK (ZINC)                     |
| 13     | 87702L   | 1                 | LOWER A-ARM LEFT '07+ TUNDRA L/T                |
|        | 87702R   | 1                 | LOWER A-ARM RIGHT '07+ TUNDRA L/T               |
| 14     | 60893    | 2                 | '07+ TUNDRA LOWER BUSHING (LONG)                |
| 15     | 60892    | 6                 | '07+ TUNDRA LOWER BUSHING (SHORT)               |
| 16     | 69704    | 2                 | INNER SLEEVE, '07+ TUNDRA LOWER, LONG           |
| 17     | 69705    | 2                 | INNER SLEEVE, '07+ TUNDRA LOWER, SHORT          |
| 18     | 10342    | 2                 | BOLT, 3/4"-16 X 4.25" CUSTOM MISALIGNMENT       |
| 19     | 10034C   | 2                 | 1"-3/4" HI-MISALIGNMENT SPACER CUSTOM           |
| 20     | 10034TUN | 2                 | '07+TUNDRA LOWER TAPERED ADAPTER                |
| 21     | 12304    | 2                 | WASHER, 3/4" SAE (GOLD ZINC)                    |
| 22     | 11302    | 2                 | NUT, 3/4"-16 C-LOCK (ZINC)                      |
| 23     | 67614    | 2                 | '07+TUNDRA LOWER BALLJOINT CRADLE (CORE CHARGE) |
| 24     | 99022    | 2                 | TIE ROD EXTENSION '07+ TUNDRA (22mm THREAD)     |
| 25     | 12078    | 2                 | WASHER, 7/8" LOCK (ZINC)                        |
| 26     | 10025    | 2                 | BOLT, 1/2"-20 X 2.50" GRADE 8 (ZINC)            |
| 27     | 10030    | 2                 | BOLT, 1/2"-20 X 3.00" GRADE 8 (ZINC)            |
| 28     | 12003    | 8                 | WASHER, 1/2" AN (GOLD ZINC)                     |
| 29     | 11001    | 4                 | NUT, 1/2"-20 NYLOCK (ZINC)                      |
| 30     | 69623    | 2                 | WELD ON LIMIT STRAP MOUNT W/ BRAKELINE TAB      |
| 31     | 69618    | 2                 | ADJUSTABLE LIMIT STRAP CLEVIS (EACH)            |
| 32     | 69611    | 2                 | 11" TRIPLE LAYER LIMIT STRAP                    |
| 33     | 97330    | 1                 | BRAKELINE TUNDRA, 4RUNNER, &'05 TACO 15"        |
| 34     | 59204    | 4                 | RESERVOIR TABS, (EACH)                          |



## Ball Joint Modification

- Once the Ball Joint cradle is removed from the vehicle, mark the steering stops with a light colored marker so you know what needs to be removed.



- Cut the steering stops off of the Ball Joint cradle using either a band saw, hack saw, reciprocating saw, or a disc cutter.



- Sand off any rough edges from cutting the steering stops off.



- Paint the sanded area so the modified cradle doesn't rust.





Note for 87000-B:

If installing an 87000-B kit, make sure the sticker side of the lower control arm is facing the front of the vehicle.

